

Smoke Signal

CHATSWORTH HISTORICAL SOCIETY
10385 Shadow Oak Drive, Chatsworth, CA 91311
(818) 882-5614
www.historicalsocieties.net



Co-Presidents: André & Linda van der Valk

July 2012, Issue #3

Editor: Ann Vincent

Co-Presidents' Message

By Linda & André van der Valk

It seems like it was just yesterday that we were getting ready for The Garden Festival and it is already July.

I want to thank Bea for organizing another great event for us. She still has her connections because the weather was perfect and we had worried about rain and winds just a couple of days before. Jelena did a great job in organizing the tea. We did very well and it keeps us at our goal of having two years of operating expenses in the bank.

Chatsworth Park is still closed after four and half years. We now have the problem that the park is not being watered and there has not been any brush clearance which puts us, the homes behind us and Rockpointe at risk for fires. Apparently OSHA has to okay the park employees to be able to go in and mow. The new trees that were planted before the park was closed are dying. The whole scenario is a shame. I know the Councilmen's office is working on getting the park open and we hope that at least the Recreation Center could be opened in the near future. There isn't one day that we are at the Acre that someone doesn't come by who wants to hike or picnic and did not know the park was closed. When the situation is explained to them they leave as puzzled as we have been for the past four years.

The docents have been very busy Wednesdays working in the gardens and the museum. We are planning a new group of pictures for the museum for Pioneer Day. It seems early but the way the summer is going I am sure that October will be here before we know it.

Happy Summer, Linda and André

Chatsworth Historical Society
Board of Directors 2011-2012

| | |
|-----------------------------|----------------------------|
| Co-Presidents | Linda & André van der Valk |
| Programs, Ways & Means..... | Bea Berman |
| Membership..... | Keith Watts |
| Treasurer..... | Ray Vincent |
| Recording Secretary..... | Elaine Campbell |
| Smoke Signal..... | Ann Vincent |
| Museum Curator..... | Virginia Watson |
| Cottage Curator..... | Betty Summers |
| Hospitality..... | Jelena Csanyi |
| Garden Director..... | Jim & Betty Summers |
| Director-at-Large..... | Beverly King |
| Director-at-Large..... | Connie Ager |
| Permanent Member..... | Lila Schepler |

Upcoming Events

July and August

NO GENERAL MEETINGS

Docents continue to work in the garden and on the museum/collection during the summer months.

Monthly - Museum Open House

The Homestead Acre is open to the public the first Sunday of each month from 1 to 4 pm. The next open house will be August 5th and September 2nd.

September 9, 2012 – Sunday 4:00 pm

MEMBERSHIP ROUND-UP

Mark the date and plan to join us for a casual afternoon gathering and barbeque to meet and greet our new and current members. Please take the time to invite new or prospective members to join us.

October 7, 2012 – Sunday 11-4 pm

PIONEER DAY

Come enjoy the surroundings of the Historic Acre as we provide the opportunity to see Chatsworth as it was in the early days of 1888, when the town was formed. Games and Chores of Yore will be available for the kids to experience. This year the museum display will focus on Stoney Point, Historic-Cultural Landmark #132. Our Chatsworth Pioneer Family information will also be on display.

GARDEN FESTIVAL

By Bea Berman

Another event is over and my thanks go to everyone who was so helpful, starting with setup Saturday. The Garden Festival was great, weather and all. I hope I haven't forgotten anyone as I thank all of you.

Set-up Saturday morning included Jelena, Connie and her sister, Jake, Janine, Chuck and Dorothy Knoll, Bob Dager, Al and Sheryl Pinero, Betty and Jim Summers, Beverly King's son, Annette Campbell, Andre and Linda van der Valk, Gary and Randi Bercow, Rico and Adie Betita, Gary's friend Matt Jones, John Huffman and four students from Chatsworth High School providing community service and myself. Setting up the tents and tables really went smoothly.

Then came Sunday and I really appreciate all the workers and what they did. First of all, thanks to Councilman Mitch Englander for providing us the shuttle bus. We couldn't have had the success without it. Mel-o-dee Nursery, Randy Mineo, and Dr. Gary Standke all provided roses and plants to sell. Janine Bergez and Annette Campbell were great running the plant booth. Connie Ager and my daughter Adie did a fantastic job at the white elephant booth. Thanks to Rod and Loretta Sandavol, who donated most of the baked goods and to everyone else who contributed items to sell. Kathy Underwood guided Janis (Elaine Campbell's daughter) and member Dottie Sammarino working at the bake sale booth. The information booth was manned by Diane Kartiala and Barbara Pampalone along with Donna Smith. Keith Watts assisted Irene Nalbandian at the front gate greeting all of our guests. Elaine Campbell manned the museum and Beverly King and Betty Summers gave tours of the cottage throughout the day.

We appreciate our vendors who brought a variety of items to share with us. It was great having our community groups and garden clubs who provide information about their activities here in Chatsworth. Diana Dixon-Davis helped the children attending make paper flowers.

The Duchess Tea was phenomenal and it couldn't have been done without Jelena organizing everyone and everything. Remember nothing is bought; everyone makes and donates the food. Vicki Briskman made the egg salad sandwiches, Linda Ross and Beverly King made the the Cucumber and cream cheese sandwiches, Randi Bercow made the tuna sandwiches along with my other children. Elaine Campbell made Chicken salad sandwiches while Katherine Weisman made Lemon-Rosemary cookies for us. I baked the date nut bread and the chocolate chip peanut butter cups and Betty Summers with the help of Connie Ager made the scones, while Linda van der Valk provided the fruit. Behind the

scenes were those that made it happen smoothly. That included Clara Woll, Katherine Weismen, and Carol Lucas working with Jelena Csanyi. At the end of the event, thanks goes to Donna Boswell who arrived from the airport and came directly to help wash dishes and clean up the kitchen after the Tea.

Our Tea guests were greeted by Randi Bercow and Zena Thorpe selling tickets to the Tea, while our Lawrence Middle School students served them at the tables. My grand-daughter Jessica was my gopher and wherever needed, she guided the students as to what to do.

A special Thanks to Elaine Henry Tavares for bringing the wonderful Polynesian dancers who performed following the Tea in our gardens. In addition, Linda and André's granddaughters did a wonderful job selling lemonade in the garden to our guests.

We had students on hand from Chatsworth High School providing community service working in our parking lot during the day and helping us take down and put away everything after the event. Mrs. Pena and Mr. Van Dam brought their leadership students from Lawrence Middle School, who were all so helpful. A special thanks to my son-in-law Rico, and our friend Matt Jones for manning the parking lot with the Chatsworth High Students. It went very smoothly.

The van der Valk family donated all the food and beverages provided for the snack bar with Buck Barker of the Munch Box providing all the ice. The supplies for the snack bar are 100 percent donated. Gary Bercow cooked hot dogs at the food booth, while three generations of the van der Valk clan actively participated in both selling and cooking!

Take down was great; Mr. Van Dam joined the group helping to take down the tents. My son-in-law brought another friend, Greg, and his friend Matt stayed to help. Our regulars were on hand too, Randy and Becky Mineo, Betty and Jim Summers (who goes above and beyond), John Huffman and of course, André and Linda.

So you see this is not a one man job. My thanks to everyone for making me look good and we made about \$5,500.00. I get to have a little rest and then I start thinking of Pioneer Day which is October 7th.

Additional thank you to Saul Daniels and his son Hunter for the beautiful video recap of the 2012 Garden Festival posted on PATCH.com.

To see it go to Northridge.patch.com, select NEWS, select HOUSE & HOME and scroll down to: **VIDEO: Chatsworth Stops to Smell the Flowers**



Chatsworth Historic Sites

Chatsworth Historic Acre

L.A. Historic Cultural Monument 133



10385 Shadow Oak Drive, Chatsworth, CA 91311
Chatsworth Park South. This little ranch bungalow is typical of those built by the homesteaders of the San Fernando Valley with their own hands. Virginia Watson

Museum and Gardens located within the Historic Acre. Open 1st Sunday each month 1 to 4 p.m. and by appointment. Call 818-882-5614 and leave a message.

Harvester Barn

L.A. Historic Cultural Monument 645



22049 Devonshire Street, Chatsworth, CA 91311
Located on private property. Erected in the early part of this century, the complex of buildings evokes a rural farm atmosphere in the midst of what is now a

suburban setting. The main house is a California Ranch style structure. The rear California basilica-type barn still retains a high degree of remaining historic fabric. This site was the headquarters of the Palomino Horse Association of America. The barn was the birthplace of Mr. Ed.

Olive Trees (76 mature)

L.A. Historic Cultural Monument 49



Trees lining both sides of Lassen Street between Topanga Canyon Blvd and Farralone Avenue, Chatsworth. Native to the Eastern Mediterranean region, olive trees were introduced to California by

Franciscan Missionaries. These particular trees approximate the age of Chatsworth itself, having been planted by N. A. Gray in 1899.

Chatsworth Community/Pioneer Church

L.A. Historic Cultural Monument 14



22601 Lassen Street, Chatsworth, CA 91311
Original location at 10051 Topanga Canyon Blvd, Oakwood Memorial Park. Built in 1903, it is the oldest public building in the community of Chatsworth. It is reported

to be one of the few churches of New England-type architecture left in Southern California.

Stoney Point Outcroppings

L.A. Historic Cultural Monument 132



Topanga Canyon Blvd between Santa Susana Pass and Chatsworth Street. A natural site considered one of the most picturesque areas in Los Angeles. Popular rock climbing site.

Garden Of The Gods –Iverson Movie Ranch Red Mesa and Santa Susana Pass Road

Chatsworth, CA Park Entrance on Red Mesa



Historic site of Western Filmmaking. Original camera rails for filming are still in place. Sites visible from rails include Cliffs of Nyoka and the Lone Ranger Rock on east side of Red Mesa. Part of

original Iverson movie ranch location.

Chatsworth Reservoir Kiln Site

L.A. Historic Cultural Monument 141



Valley Circle Blvd and Woolsey Canyon,

Chatsworth, CA. This is also known as Chatsworth Calera Site. It is located within the Nature Preserve which is not open to the public, Directions:

Southeasterly from the intersection of Woolsey Canyon Road and Valley Circle Blvd, Chatsworth. Kiln was used to make bricks and tiles for the San Fernando Mission.

Old Stage Coach Trail

L.A. Historic Cultural Monument 92



Santa Susana Pass State Historic Park, Chatsworth, CA
Entrance on Larwin south of Devonshire.

The picturesque Stage

Coach Trail dates from the 1860's and represents a significant phase in the San Fernando Valley when the Trail linked Los Angeles, Encino, Simi Valley and Ventura. A 1939 tile marker is set in the hillside along the trail. The trail is also known as the Devil's Slide.

The Munch Box Est. 1956

L.A. Historic Cultural Monument 750

21532 Devonshire St, Chatsworth, CA 91311

818 998-9240

Hamburgers, chili dogs and root beer floats, at a classic 1950's hamburger stand.



Historical Society Research Projects

By Ann Vincent

Our docents and volunteers continue to work with our collection of documents, photos and items provided by our community that define Chatsworth. We have had fun turning many of these collections into programs to give both at our own meetings and to organizations as requested. These programs are always a work in progress and we look forward to following up afterwards to add more information and continue updating them throughout the years.

At our April 17th meeting we presented a program on the **Chatsworth Park Elementary School**, which began in 1880, and has been there since, although the building has been replaced twice, in 1917 and 1935. Following that meeting we were invited by the Principal, Ester Leon, to tour the school. Many changes have taken place, but the 1935 main building and auditorium remain in excellent condition.



There are some amazing improvements we were able to document to add to our history of the school. The spacious computer lab, a beautiful library and reading area, and we had the opportunity to visit a classroom with the state-of-the-art Smart Board in use, instead of the “old-fashioned” chalk boards. Yes we took photos that can be added to our next update of that presentation. So just in case you thought of something else you want to share with us about the school....send it in. These projects are never finished....always in progress. We will work with the school to create a photo history display for their main office and continue to help them preserve the school's history by scanning some of the old scrapbooks prepared by the PTA for future generations.

There are some amazing improvements we were able to document to add to our history of the school. The spacious computer lab, a beautiful library and reading area, and we had the opportunity to visit a classroom with the state-of-the-art Smart Board in use, instead of the “old-fashioned” chalk boards. Yes we took photos that can be added to our next update of that presentation. So just in case you thought of something else you want to share with us about the school....send it in. These projects are never finished....always in progress. We will work with the school to create a photo history display for their main office and continue to help them preserve the school's history by scanning some of the old scrapbooks prepared by the PTA for future generations.



Jim Summers, who attended the school in 1935, enjoyed a personal tour of the same classroom that we have a photo of him in. Ray Vincent, who attended in 1960 enjoyed remembering the same coat-room alcoves and tall windows.

Twin Lakes Information



is one of our current projects. Inspired by Linda Stone, who reminded us that several boxes of Twin Lake files were in storage at the Historic Acre, an overview of the history of Twin Lakes is now in process. If you are not familiar with Twin Lakes, the development was established in 1927 as a rural resort. There were two lakes, the upper lake had a dam/bridge across Devils Canyon and was used for boating and swimming. The lower lake had a dam across Browns Canyon, and the stone dam can still be seen from the north end of De Soto Ave. In 1940 the Browns Canyon Dam silted up. In 1948, the



Devil's Canyon dam gate was opened and remains open today. According to a Twin Lakes newsletter account, when the dam gate was pulled the canyon foamed with water for 40 minutes...then one million gallons of H₂O had disappeared.

We are still looking for more personal stories about the Twin Lakes development, so if you know anyone who lived there and can share photos or history of the area, please have them contact us at chatsworthhistory@gmail.com. We plan to show the Twin Lake History program at one of our meetings next year at the Acre.

Stoney Point is listed as LA Historic Cultural Monument #133. Did you know that it used to be the community gathering place for a barbeque following the 4th of July parade?



In the 1930's, Sierra Club members started testing equipment and learning how to scale the rocks. Some of the earliest famous rock climbers started there and continued teaching others at that location.

Did you know the Indians were there first? A 1939 archeological survey documented the evidence that an Indian village existed in this area.

Do you want to know more?...the Historical Society will feature Stoney Point in the museum at our PIONEER DAY on October 7, 2012.

OFFICERS INSTALLED

The officers for the 2012-2013 year were installed at the May 15th meeting as follows.

| | |
|------------------------|----------------------------|
| Co-Presidents | Linda & André van der Valk |
| Programs, Ways & Means | Bea Berman |
| Membership | Keith Watts |
| Treasurer | Ray Vincent |
| Recording Secretary | Elaine Campbell |
| Smoke Signal | Ann Vincent |
| Museum Curator | Virginia Watson |
| Cottage Curator | Betty Summers |
| Hospitality | Jelena Csanyi |
| Garden Director | Jim & Betty Summers |
| Director-at-Large | Beverly King |
| Director-at-Large | Connie Ager |
| Permanent Member | Lila Schepler |

Wondering if your Dues are Due?

There is a code on your address label (if you are a life member, there is no code).

- The first digit represents membership type, 1 – individual and 2 – family/organization.
- The next two digits represent the month that you last paid your dues.
- The last two digits represent the year that you last paid your dues.
- If the month and year on your address label is over one year old, then your dues are due!

Please use the form below to renew your Membership. And if your neighbor is not a member yet, pass this newsletter on to them and invite them to join...

It's Your Community... It's Your History

The Chatsworth Historical Society would like to have you join us in preserving Chatsworth's past. If you have any old Chatsworth publications, like the Grapevine, or have old photos of the area. We would love to have copies of your photos, but we would also like to hear your stories about growing up in Chatsworth or what brought you to Chatsworth and why you stayed here.

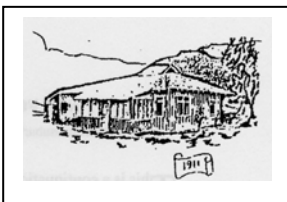
DID YOU KNOW?

Lionel Barrymore lived in Chatsworth at the north end of Independence Ave. where the Sierra Canyon High School new football field is located.
He called his 22 acre ranch Sycamore Farm.



CHATSWORTH HISTORICAL SOCIETY

Membership Form



Your membership helps support our Homestead Acre and the educational and historical programs we provide for our community. Members receive our quarterly newsletters, and receive invitation reminders regarding our monthly programs and annual events – Rose Pruning, the Garden Festival, Membership Roundup, and Pioneer Day. Please mail this form with your annual membership dues and/or contribution made payable to:

Chatsworth Historical Society, 10385 Shadow Oak Drive, Chatsworth, CA 91311
818-882-5614 www.historicalsocieties.net

- Yearly:** New Member Renewal
- Life Membership:** Individual \$15.00 Family \$20.00 Organization \$20.00
- \$ 125.00

NAME _____ Phone: _____

STREET ADDRESS: _____ Email: _____

CITY / STATE / ZIP: _____

Special Interest / Expertise: _____

Chatsworth Historical Society
Virginia Watson Museum & Gift Shop

The following items are available for sale at our Gift Shop for you history buffs that would like to share some Chatsworth History with others.

The Museum will be open for tours August 5th and Sept 2nd from 1-4 pm and items can be purchased at that time.

To arrange to purchase items other than the first Sunday of the month, call the museum at 818-882-5614 Or email chatsworthhistory@gmail.com to make arrangements for shipping if necessary.

Booklets and Books

CHATSWORTH HISTORY by Virginia Watson \$10.00

CHATSWORTH PARK ELEMENTARY SCHOOL The First 100 Years
by Ioline Cleveland \$10.00

WINDOW INTO THE PAST by William Schepler \$10.00

QUIET ON THE SET by Robert Sherman \$25.00

OUR PIONEER MOTHER As told to Lenora Johnson MacDonald \$10.00

See you at the Membership Roundup September 9th

Chatsworth Historical Society

10385 Shadow Oak Drive
Chatsworth, Ca 91311

RETURN SERVICE REQUESTED

Check the code on your mailing label ...is it time to pay your dues? (See page 5 for details)